

VELTECH

Company **PROFILE** **2022**



VELTECH HIGH END CORP.

7380 SAND LAKE ROAD
ORLANDO FL 32819
407.499.3878
SALES@VELTECHCORP.COM

WWW.VELTECHCORP.COM

Our Mission & Vision

VELTECH's family dreams every day to leave a remarkable impression of their determination with our client's, convinced that outstanding performance in quality and completion time means repetitive opportunities.

VELTECH aspires to be the most reputable, admirable, and trustable company and be our clients' number one non-brainer choice for every high-end project based on our principles.

Motto

A handshake at the beginning and a hug at the completion

Corporate Key Words

Passion, Determination, Reliability and Consistency

Our Top Services

- Dry Wall Instalation Interior and Exterior
- Interior Remodeling services - Turn key
- Acoustical and Integrated Ceiling Instalations
- Flooring and Carpet Floor Coverings
- Bathroom remodeling services
- Painting
- Interior build out
- Interior and structural metal stud framing
- Door and hardware instalation
- Rough carpentry
- Thermal and acoustical insulation
- Light gauge steel framing Solutions

DRY WALL INSTALLATION INTERIOR AND EXTERIOR

First thing first! Experience, VELTECH is very proud to integrate highly experienced crews with no less than 35 years of combined experience in our supervisors and group leaders for every job. Our extreme quality and unique performance principles are guided by a track record of completed projects by our experienced team.

Our trademark is the conviction of winning repetitive business conducted by an outstanding quality level and speedy project completion. VELTECH does not do the project but creates long-lasting relationships.

- Premium Service
- Drywall Installation
- Drywall Framing
- Drywall Replacement
- Drywall Repair
- Drywall Finishing
- High End and Luxury Residential Projects
- Commercial Projects
- Institutional Projects
- Industrial Projects
- Wallboard and Plasterboard



**INTERIOR AND
EXTERIOR REMODELING
SERVICES - TURN KEY**

A Full-Service Remodeling Contractor VELTECH recognizes the importance of every remodeling; no matter the project's size, our personnel's dedication, and passion will consistently deliver an impeccable Outcome. As a leading full-service improvement contractor, all the remodeling services are covered without the need to have multiple contractors, and our promise of excellence and devotion to our client's satisfaction has placed us in a very privileged position.

The skillful management team will work with you to plan, coordinate, direct, and control your project in every possible aspect. Our completed projects have included five stars and six stars hotels over the entire state of Florida.

1. Kitchen Remodels
2. Bathroom Makeovers
3. Whole-House Remodeling
4. Initial design and planning
5. Procurement and installation of products
6. Replacing flooring and molding
7. Painting and installing wallpaper
8. Updating electrical and plumbing systems
9. Handling demolition and debris removal



ACOUSTICAL AND INTEGRATED CEILING INSTALLATIONS

As a leading acoustical ceiling contractor, our team is trained constantly with the latest market tendency in the ceiling installation, and we are organized to assist from the design development to the final touches on the building.

In the universe of ceilings, there is a lot to comprehend. VELTECH makes that learning curve very easy and pleasant for each client and project manager; we are acoustical ceiling contractors known for our unique and complex ceiling designs installations. We know what you need and can get the job done right.

In a rich memoir of delivering excellent projects as an acoustical ceiling contractor, we understand that every project has unique circumstances that must be evaluated.

1. Prefabrication is our crucial concept with rendering and Shop Drawings
2. Profound planning and night shifts
3. Hospital works
4. Luxury Hotels
5. Luxury Shopping Centers
6. Professional offices
7. Remodeling works

Our collective expertise and knowledge work with products and installation procedures that condense the extent of vertical framing obstacles without compromising a firm installation.

The time is taken to understand and analyze the end-use of a space and provide suitable materials, whether that be nonmagnetic specialty grid, washable surfaces, high humidity, or fire-rated materials.



FLOORING AND CARPET FLOOR COVERINGS

The bread and butter of the VELTECH business are Flooring and carpet installations, and our most important criteria are to ensure a smile of satisfaction once you see the project completed; our motto is A handshake at the beginning, a hug at the completion.

CARPETS

- Textured Carpet
- Plush Carpet
- Frieze Carpet
- Cable Carpet
- Berber Carpet
- Cut and loop carpet



TILES

- Ceramic Tiles
- Porcelain Tiles
- Glass Tiles
- Cement Tiles
- Marble Tiles
- Mosaic Tiles
- Granite Tiles
- Limestone Tiles
- Travertine Tiles
- Quarry Tiles
- Metal Tiles
- Resin Tile



FLOORING AND CARPET FLOOR COVERINGS

The bread and butter of the VELTECH business are Flooring and carpet installations, and our most important criteria are to ensure a smile of satisfaction once you see the project completed; our motto is A handshake at the beginning, a hug at the completion.

LAMINATE

- Glueless-Click
- Glued Laminate.
- Pre-Glued.

PVC

- Glue-down floors
- Self-adhesive tiles
- Loose lay flooring
- Interlocking tiles

WOOD

- Solid Wood
- Engineered Wood

WATERPROOF STONE PLASTIC
COMPOSITE



BATHROOM REMODELING SERVICES

VELTECH provides the most comprehensive remodeling services for hotels, institutions, corporate buildings, and commercial bathroom remodeling services.

- Replacement of toilet partitions
- Replacement of toilets
- Replacement of sinks
- Bathroom Vanities & Countertops
- Shower bases
- Bathtubs
- Faucets and Fixtures
- Bathroom Lighting



We offer a full range of surface preparation and cleaning for your warehouse or manufacturing equipment, interior or exterior, including thin-film intumescent coatings on steel for fire prevention, machinery repair, corrosion-resistant finishing, and tower maintenance and storage tanks. When it comes to industrial plants, our staff have extensive experience with both the materials and the application.

From painting to renovating the interior or exterior of commercial and residential structures, we implement the same safeguards and operating protocols that we implement on all of our projects. Veltech maintains the necessary liability, workers' compensation and surety bonds. We provide quick response, quality workmanship and commitment to safety standards.



VELTECH's central core is Interior buildout construction; we love and are passionate about the process of preparing the interior of a newly constructed building or renovating an existing space to create functional areas such as offices, stores, restaurants, or homes for existing or future tenants

For over ten years, VELTECH has been building the interiors of offices, medical facilities, restaurants, and retail stores. VELTECH's preconstruction and construction services offer our clients everything from designing your project to creating construction budgets, permitting, and construction buildout.

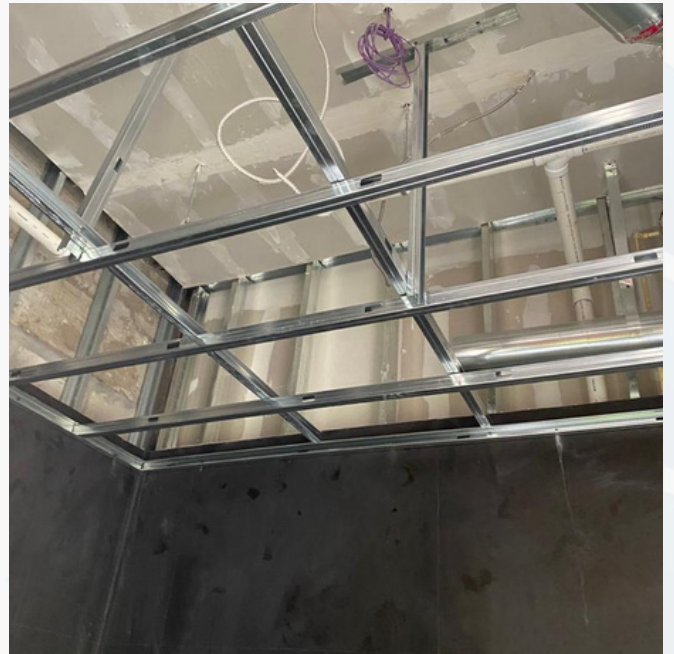
- Commercial Construction
- Commercial Interior Build-Outs
- Commercial Design
- Interior Architecture
- Commercial Interior Design
- Commercial Renovation
- Construction Remodel
- Commercial Architects
- Apartment Remodeling
- Office Remodeling
- Building Remodeling
- Building and Construction



INTERIOR AND STRUCTURAL METAL STUD FRAMING

VELTECH is a Highly experienced metal framing contractor and has been performing steel stud construction for many years with repetitive success

- Light gauge steel framing
- Metal Panel Installation
- Load Bearing Walls
- Curtain Walls
- Tall Interior Partitions
- Office Buildouts
- Ceilings steel framing



DOOR AND HARDWARE INSTALATION

Door installations work has been an extra service always grateful by our clients the VELTECH has provided through the years.

- Industrial Doors
- Slab Doors
- Bifold Doors
- Accordion Doors
- Barn Doors
- French Doors
- Hidden Doors
- Café and Salon Doors



Insulation is a service offered as our intention to be the single solution contractor to our clients. spray polyurethane foam insulation, fiberglass batt insulation, blown insulation are an area of expertise for us

- Spray polyurethane foam insulation
- Fiberglass batt insulation
- Blown fiberglass
- Fire retardant Insulation



INTERIOR AND EXTERIOR DEMOLITIONS

Years of combined experience have given us the total trust of our clients for demolition works, and demolition can be the difference between a good or a lousy commencement; always start with the right step using VELTECH's Demolition Crews.

- Garage demolitions
- Deck demolitions
- Basement demolitions
- Excavations
- Interior demolitions
- Condo selective demolitions
- Partitions demolitions
- Commercial demolitions
- Residential demolitions
- store demolitions
- demolition legalizations
- Bathroom demolitions
- Kitchen demolitions



LIGHT GAUGE STEEL FRAMING SOLUTIONS

VELTECH produce steel framing solutions, manufacturing and distributing light gauge steel framing stud and track, high bay walling and continuous walling for the industries.

- **STUD AND TRACKS**

Stud and tracks are supplied as cold rolled sections (C or U), we offer stud and track in various sizes, factory cut to length, and with the fastest response in the market actually.

Studs may have pre-punched service hollows at required positions at no extra charge. Track can be provided plain or slotted at client's or installer's choice.

VELTECH's adaptable structure permits rapid construction of walls to carry external casing and multifaceted design features. Finishes can be adjusted within the system engineering to ensure the finished system is appropriate for intended purpose.

For more information or to examine your specific projects requirements or details please contact us and we will assist you at our earliest convenience.



LIGHT GAUGE STEEL FRAMING SOLUTIONS

- **HIGH BAY WALLING**

VELTECH have supplied numerous projects where our high bay walling is used to provide separating walls, basically all types of building can benefit from this technique when used to construct fast and cost-effective method of distributing spaces where height is a concern.

We have the capability to manufacture and supply sections to the order to facilitate single stud application in all occasions. A totally engineered solution can be designed, supplied and manufactured to suit almost any specification and circumstance.

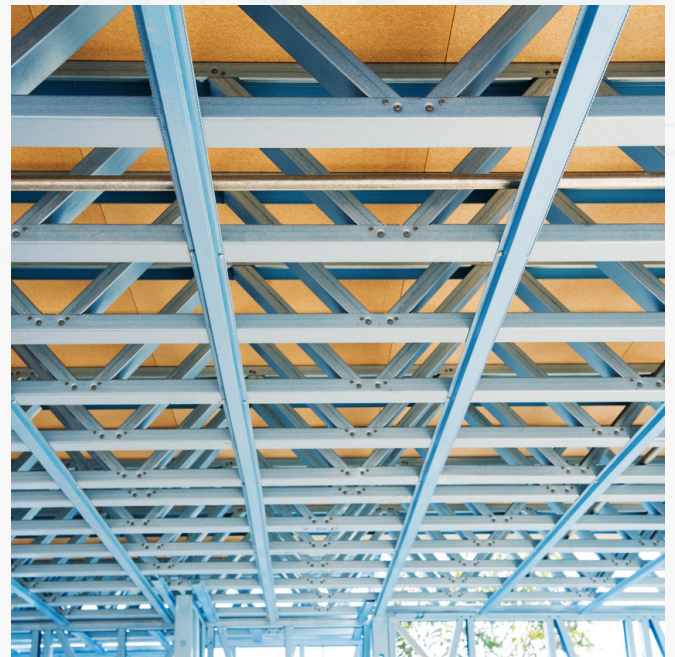
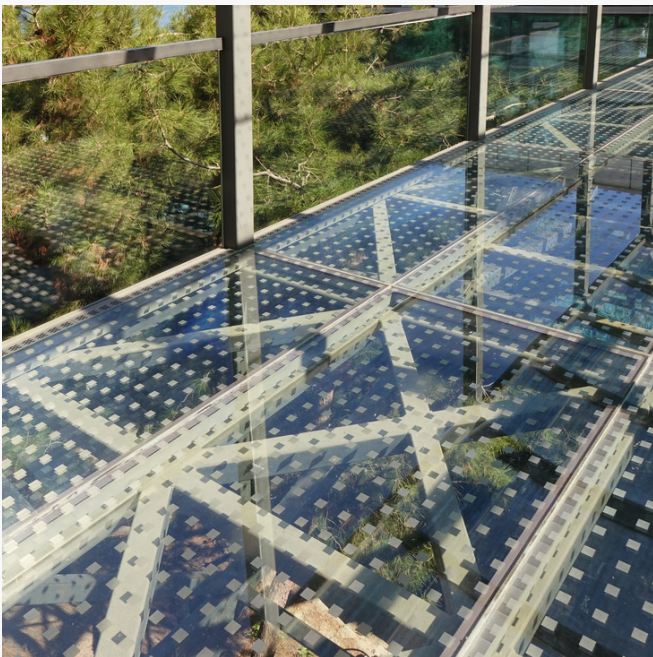
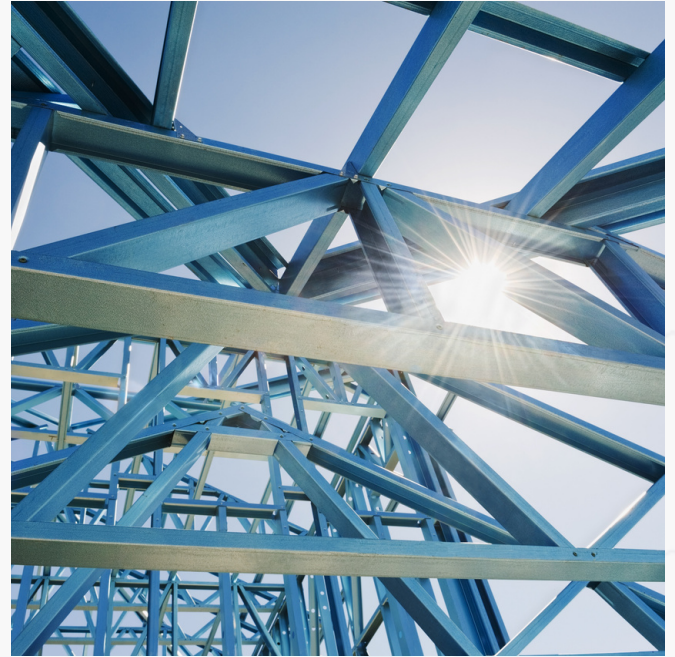
- **CONTINUOUS BAY WALLING**

In this method of external or internal framing VELTECH uses prefabricated and shop assembled technology for skeletons, facias, or external structures to the main frame structure, typically hung on hanging supports or cleats. The main advantages of this type of system are to extend interior flooring space and to take out many lateral inconsistencies in slab or frame edge.



- Load Bearing Framing

VELTECH have the ability to produce multi story buildings using load bearing system that incorporates all exterior walls, load bearing walls, floors and roof structures. All complete with comprehensive design and full structural calculations as per Florida applicable code of construction. Our detailing and engineering department will produce astonishing 3D drawings and shop drawings to ensure a perfect fabrication and erection of the Light gauge steel framing.



LIGHT GAUGE STEEL FRAMING SOLUTIONS

- Light Gauge Modular Steel Framing Solutions

VELTECH have been providing light gauge steel framing products to the modular construction sector since 2011, our extensive experience in the steel fabrication market gave us very valuable experience to deliver cost-effective value engineered solutions for our clients. The light gauge steel framing meets the strictest tolerances and will be designed and rolled using state of the art technology. The experience of our engineering team will ensure and deliver cost savings without sacrifices on quality.

Our clients become our partner and we will provide support from initial analysis through to final release. In humble language, we will be fully dedicated to our clients and our clients will be always a priority. When requested our state-of-the-art software which is fully compliant with Building Information Modeling (BIM) will be part of the project. All client's needs will be fulfill, we will make it happen and we will save you money for sure. Our experience in design and estimation facilitates us to predict cost savings that other companies might ommiss, and pass those savings on to our clients.



CONTACT US

ADDRESS



VELTECH High End Corp.
7380 Sand Lake Road
Orlando FL, 32819

Postal Address
PO Box 690986
Orlando, FL 32869



Phone 407.4993878
Toll Free 1.888.361.5999



as@veltechcorp.com
agutierrez@veltechcorp.com
sales@veltechcorp.com



"The maximum level of pride" 